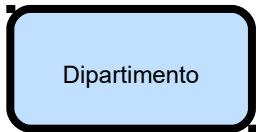
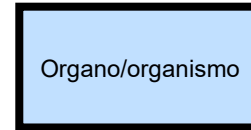


# Rappresentazione e Legenda



**Dipartimento Strutturale**



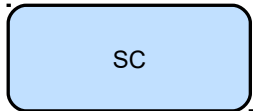
**Organo/organismo**



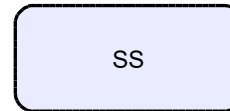
**Dipartimento Funzionale**



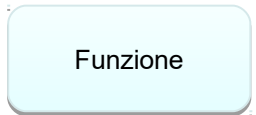
**Struttura Semplice Dipartimentale**



**Struttura Complessa**



**Struttura Semplice**

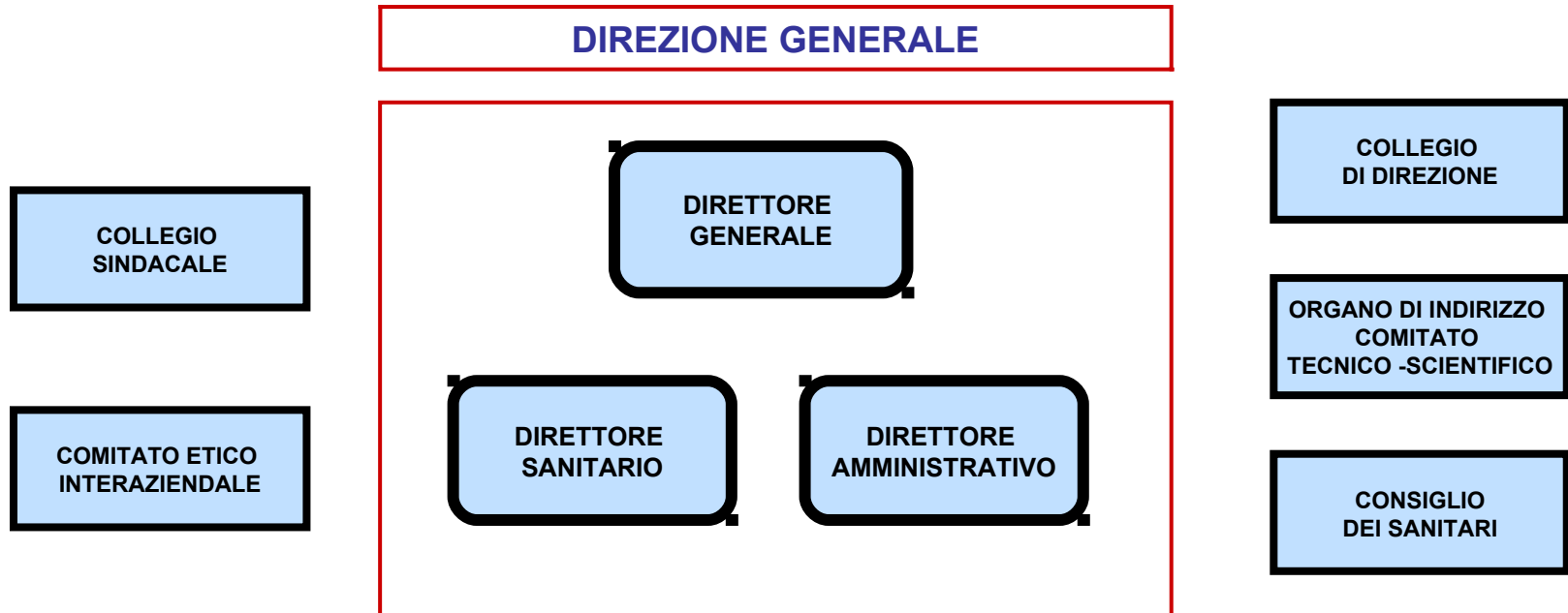


**Funzione**

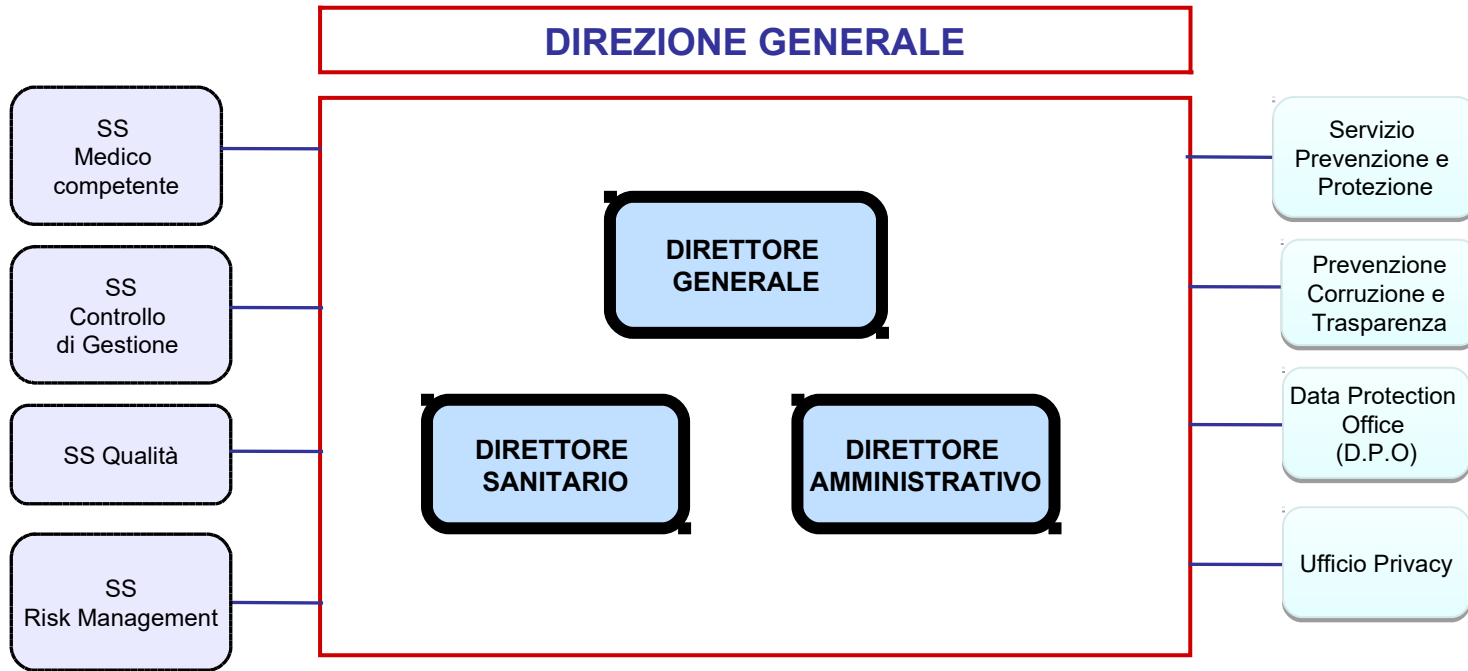
(non concorre alla determinazione del numero delle strutture)



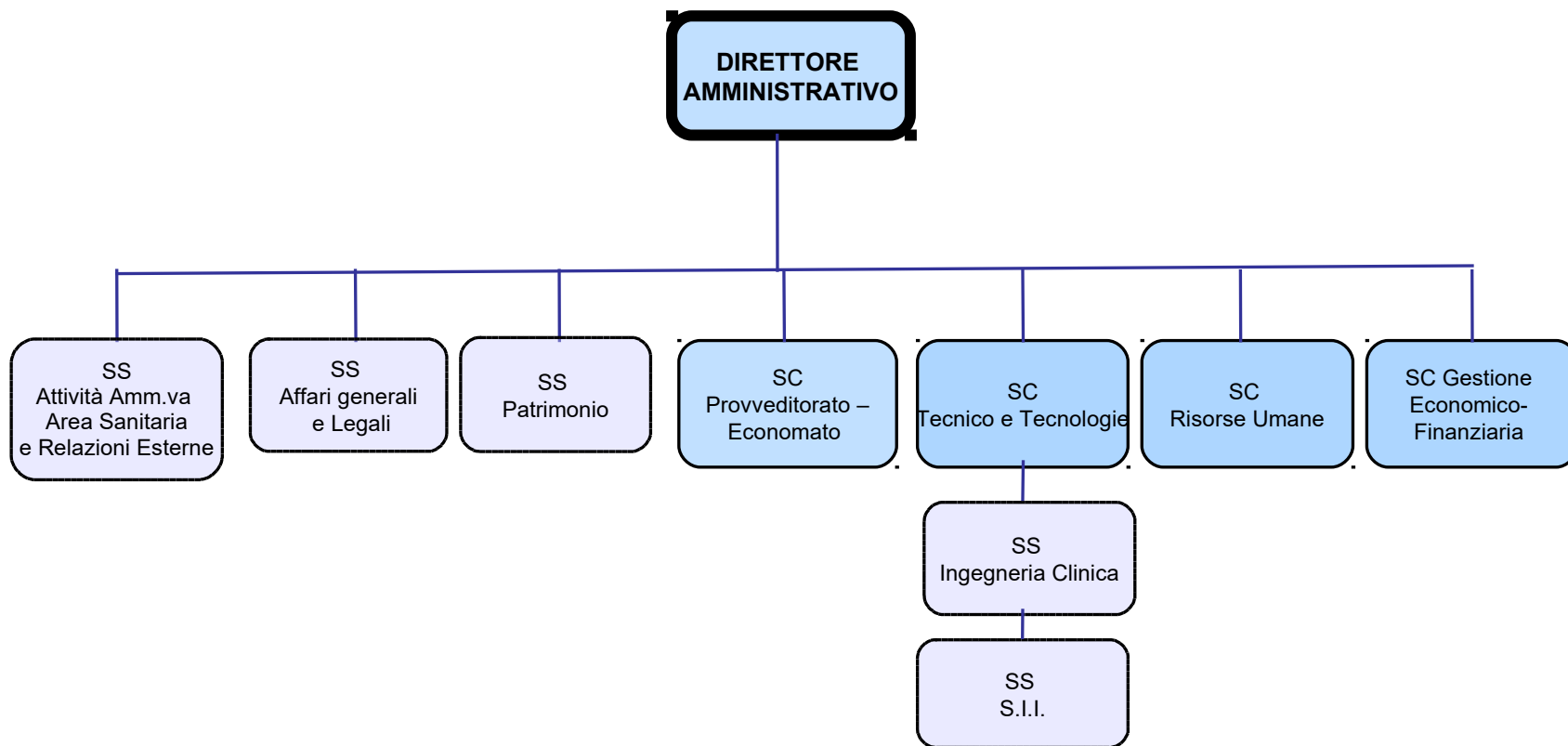
# Organigramma aziendale



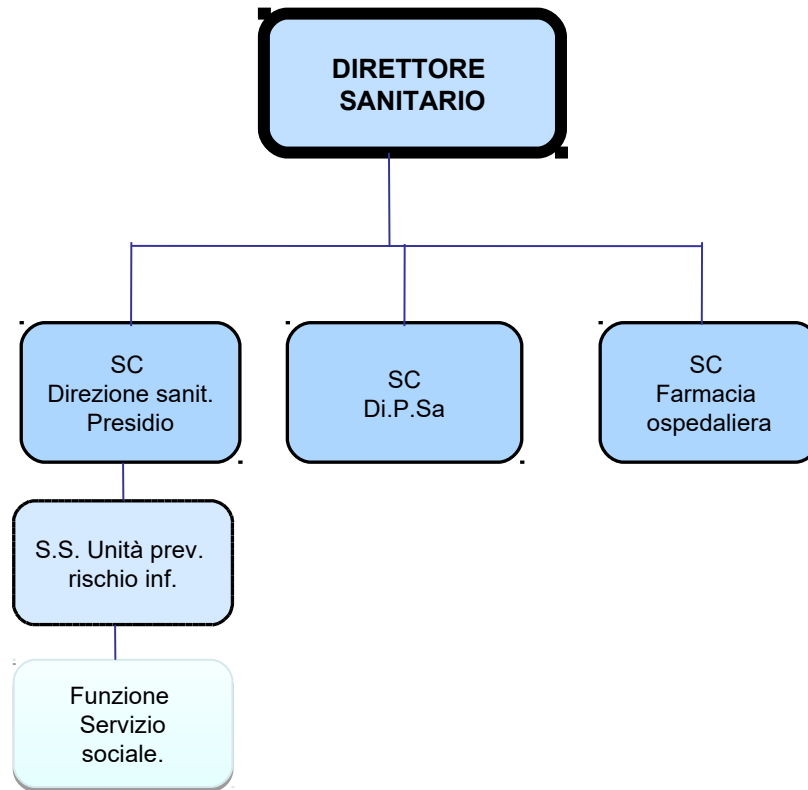
# Staff Direzione Generale



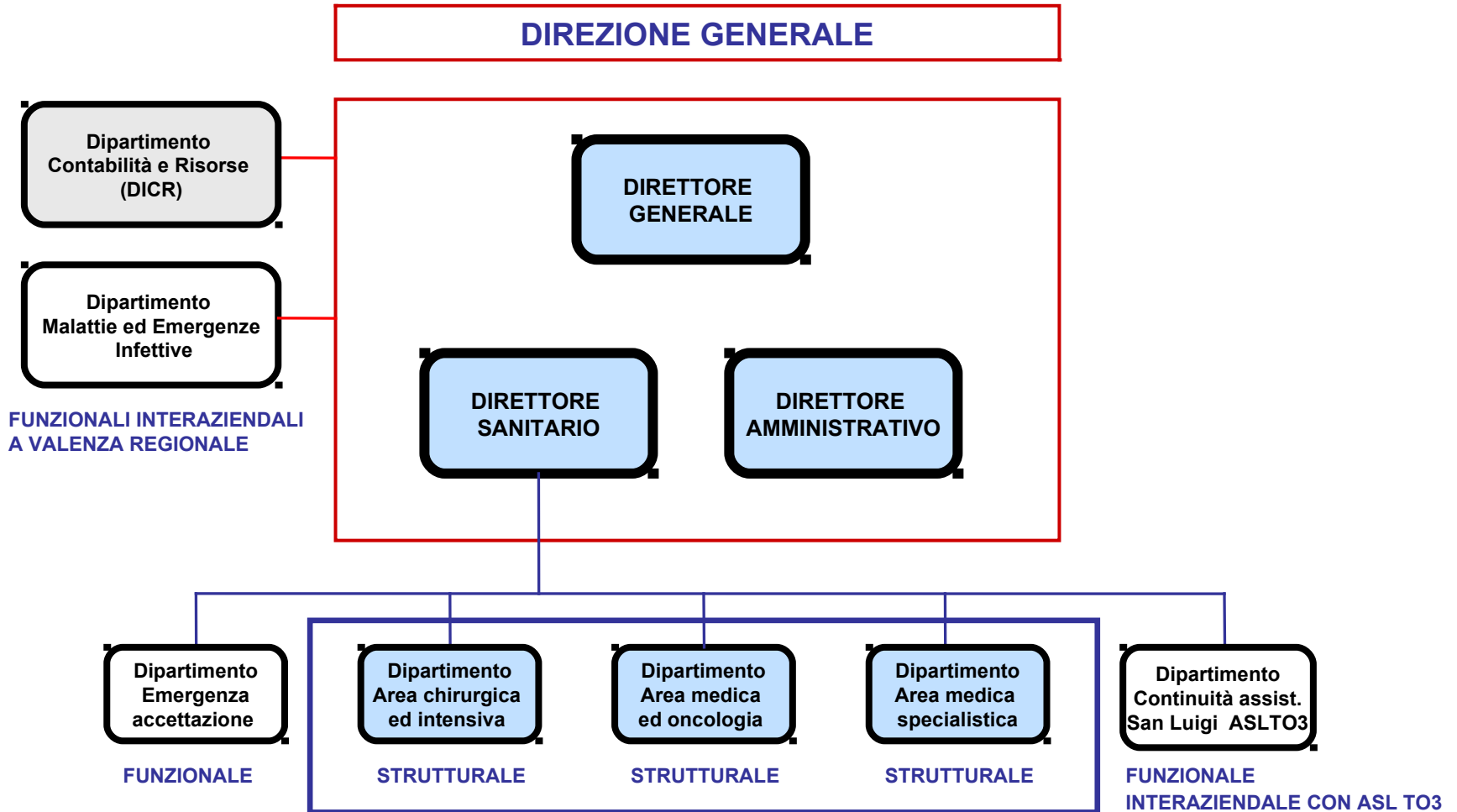
# Line Direzione Amministrativa



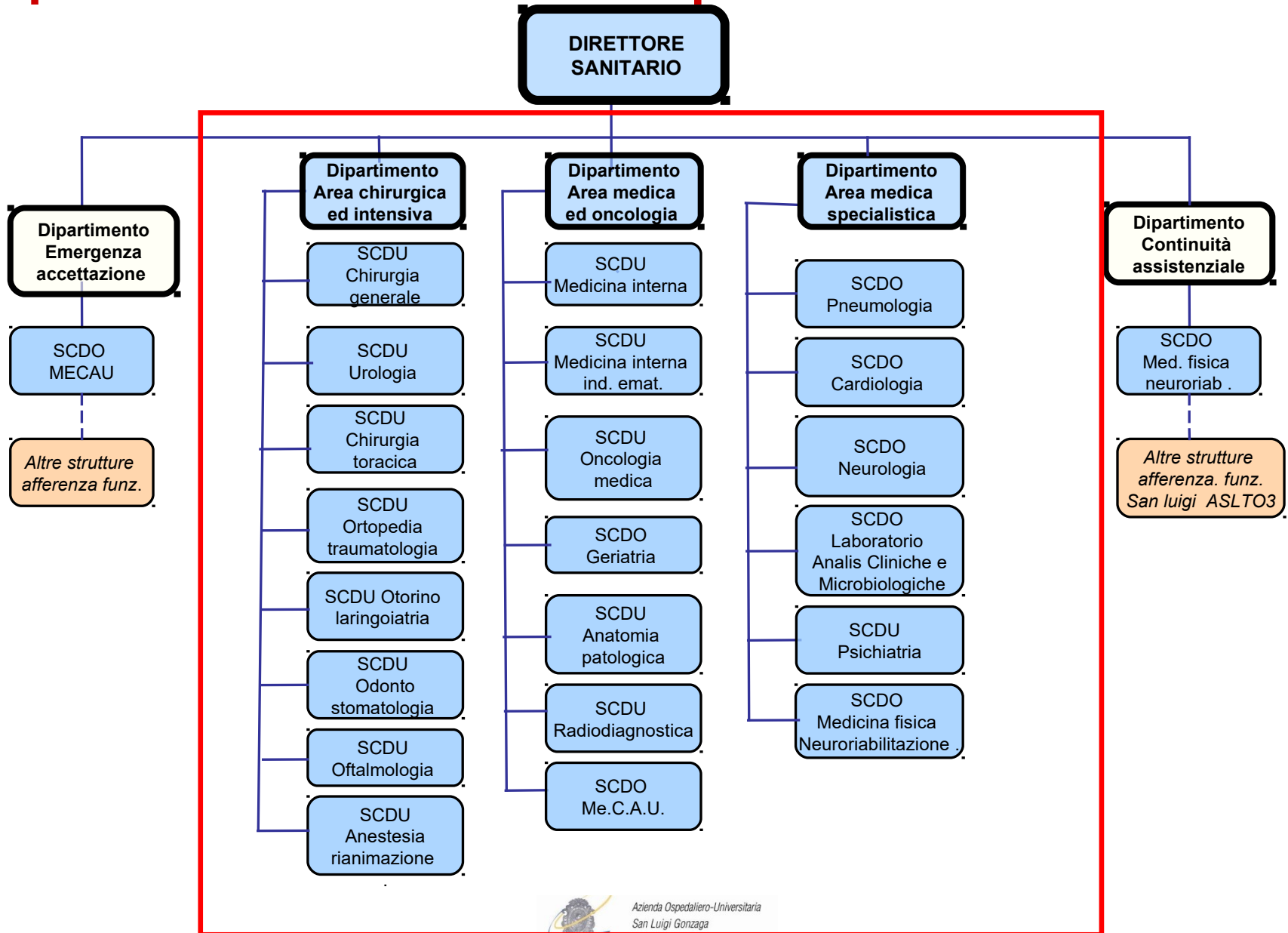
# Line Direzione Sanitaria



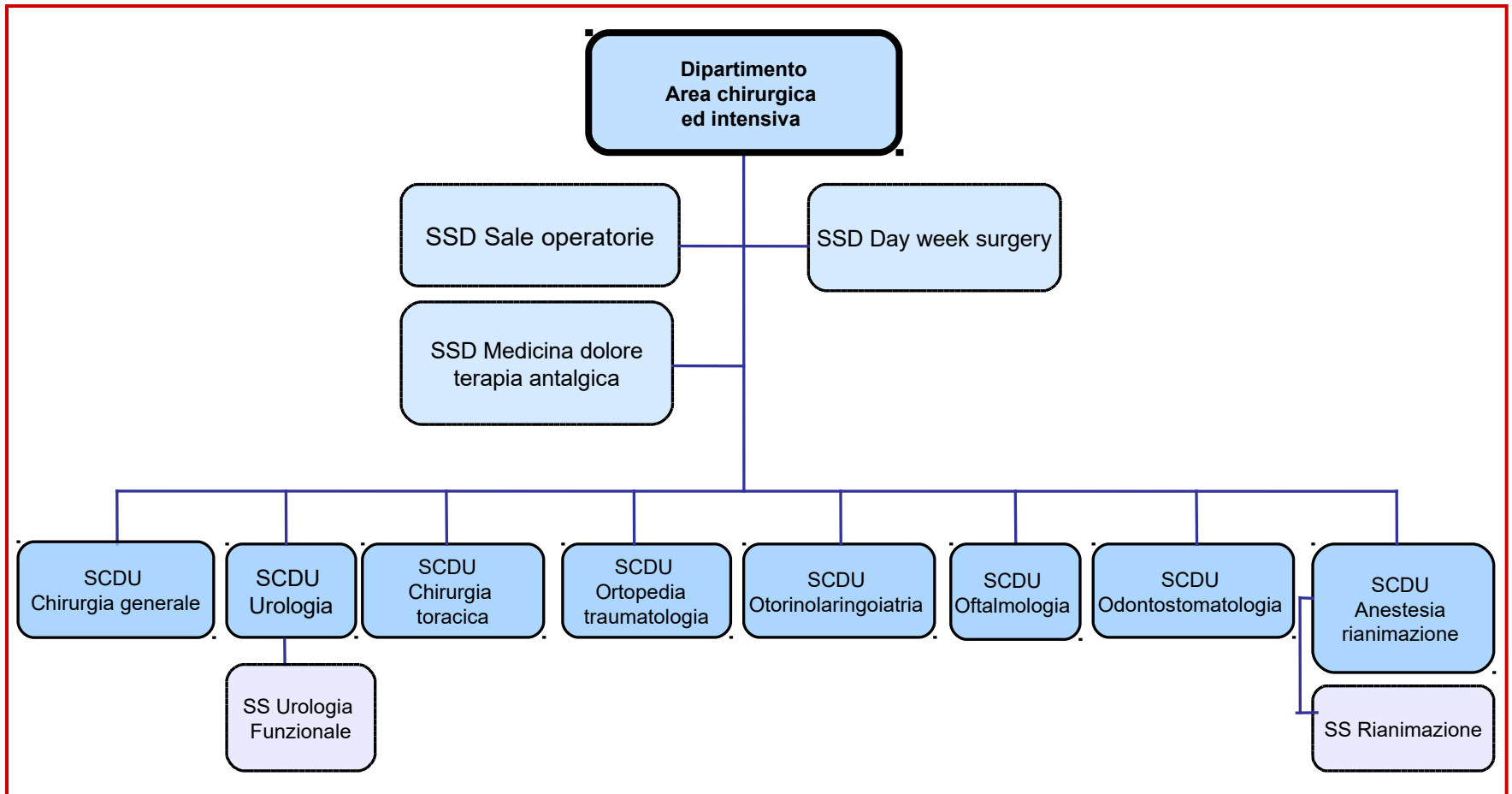
# Dipartimenti



# Dipartimenti e Strutture Complesse

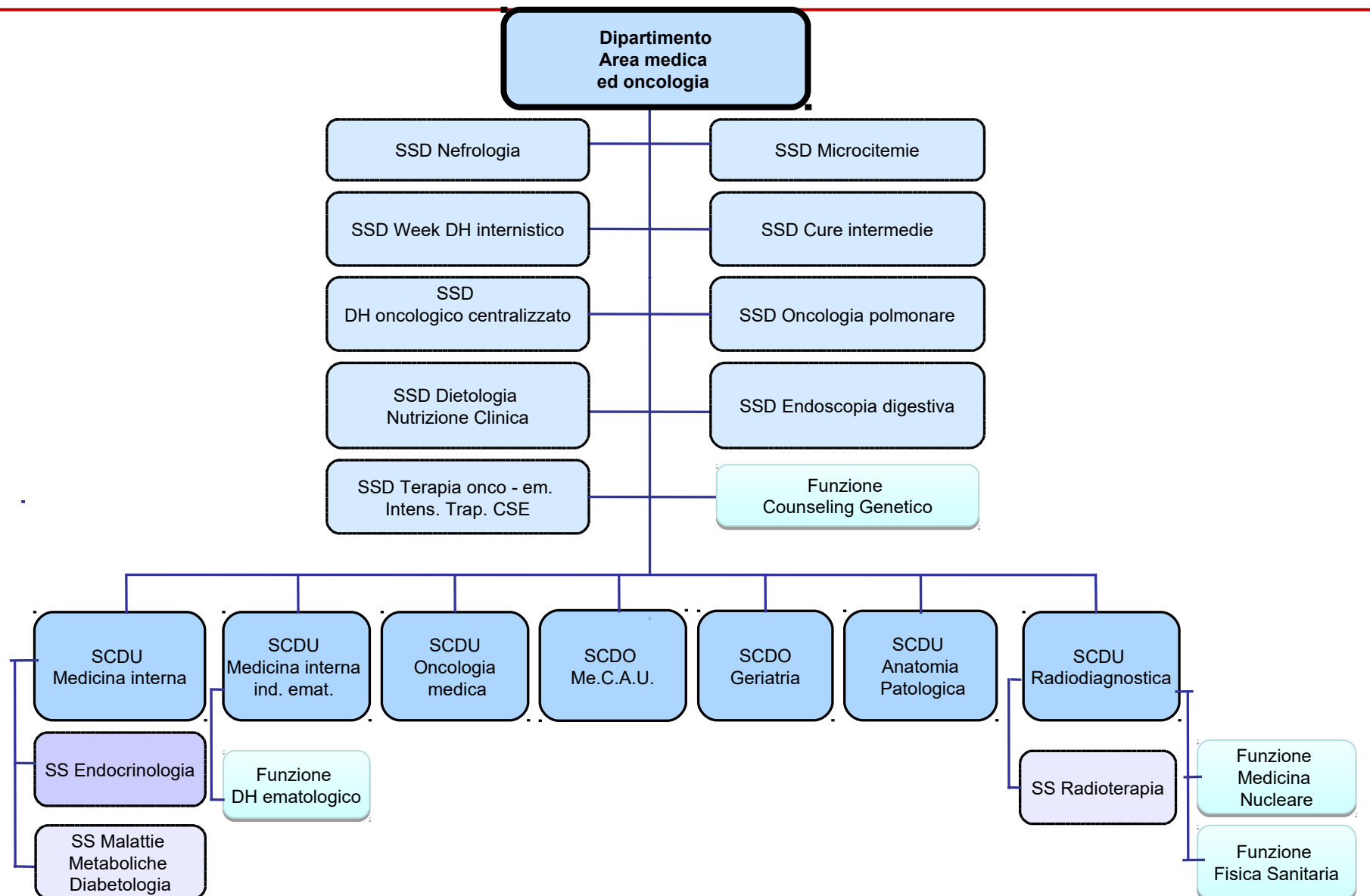


# Dipartimento area chirurgica ed intensiva

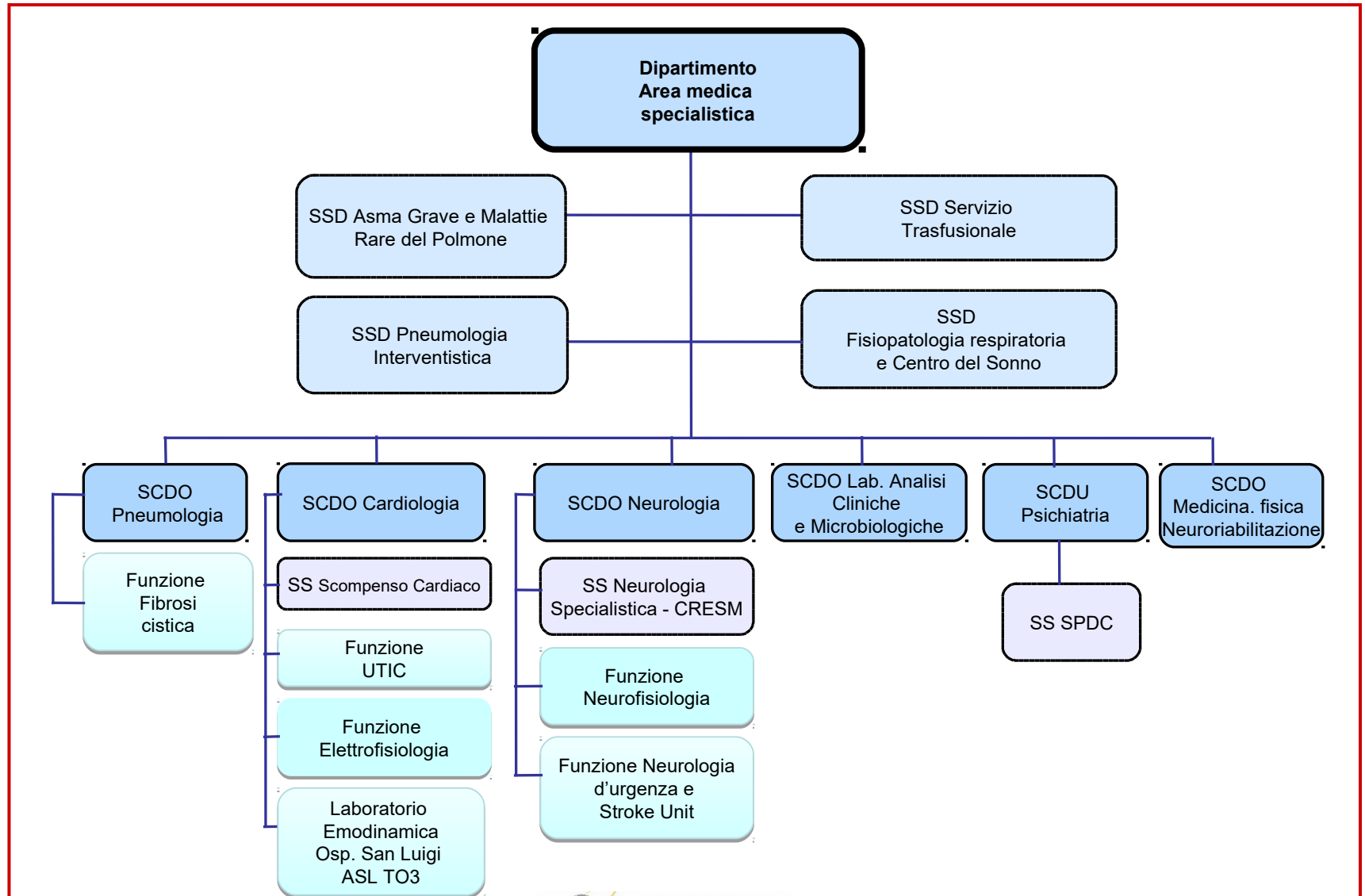




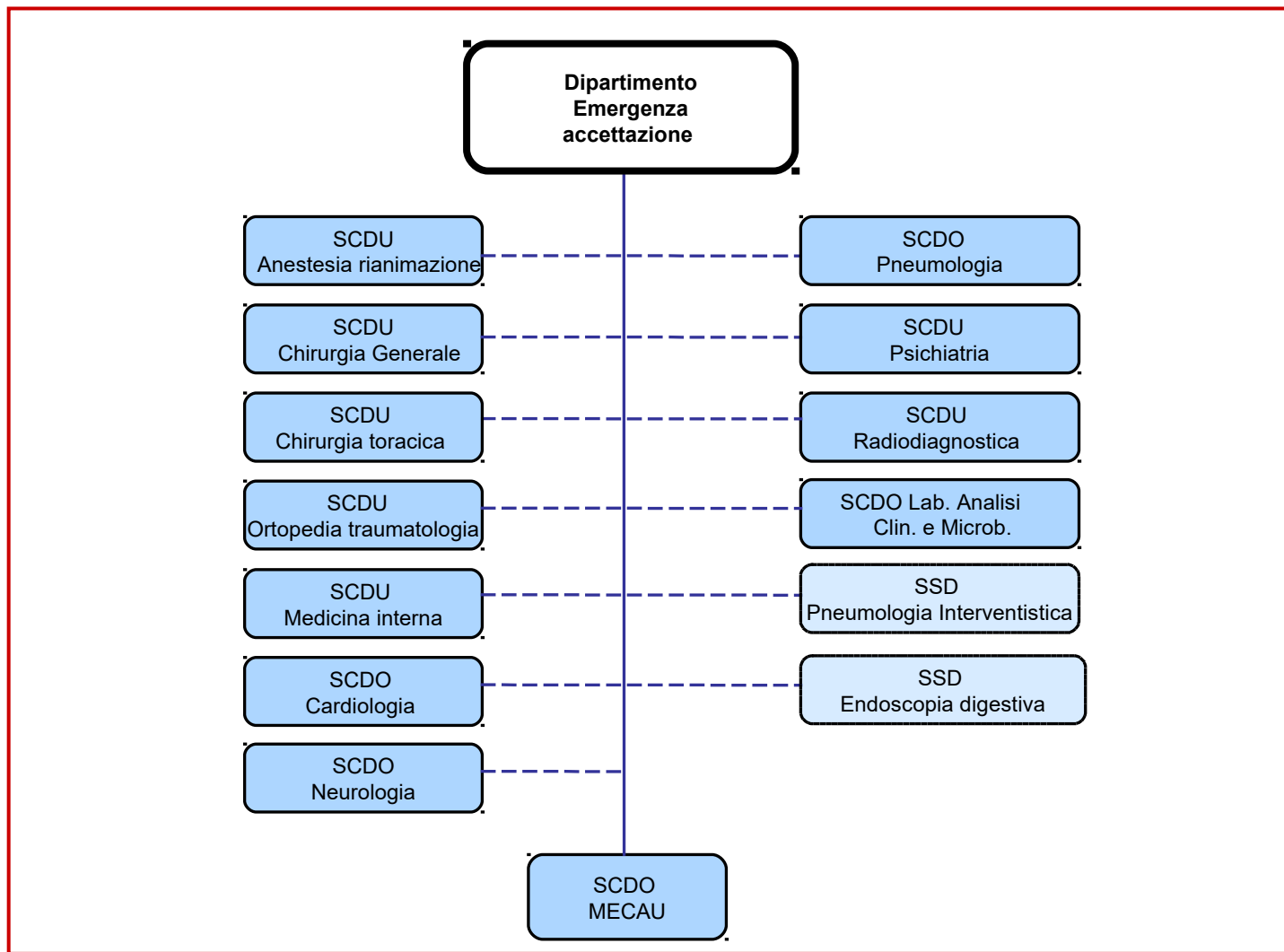
# Dipartimento area medica ed oncologia



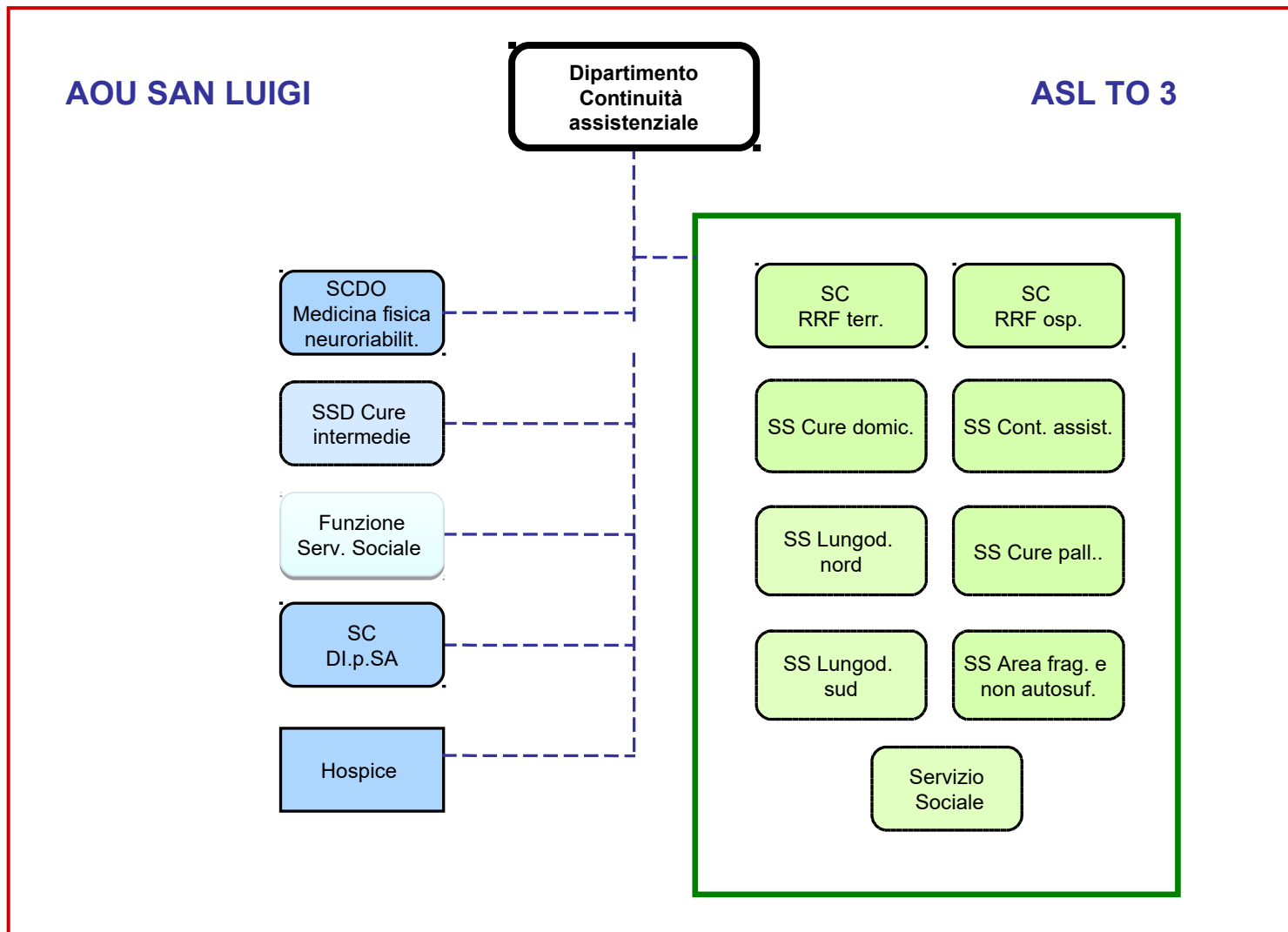
# Dipartimento area medica specialistica



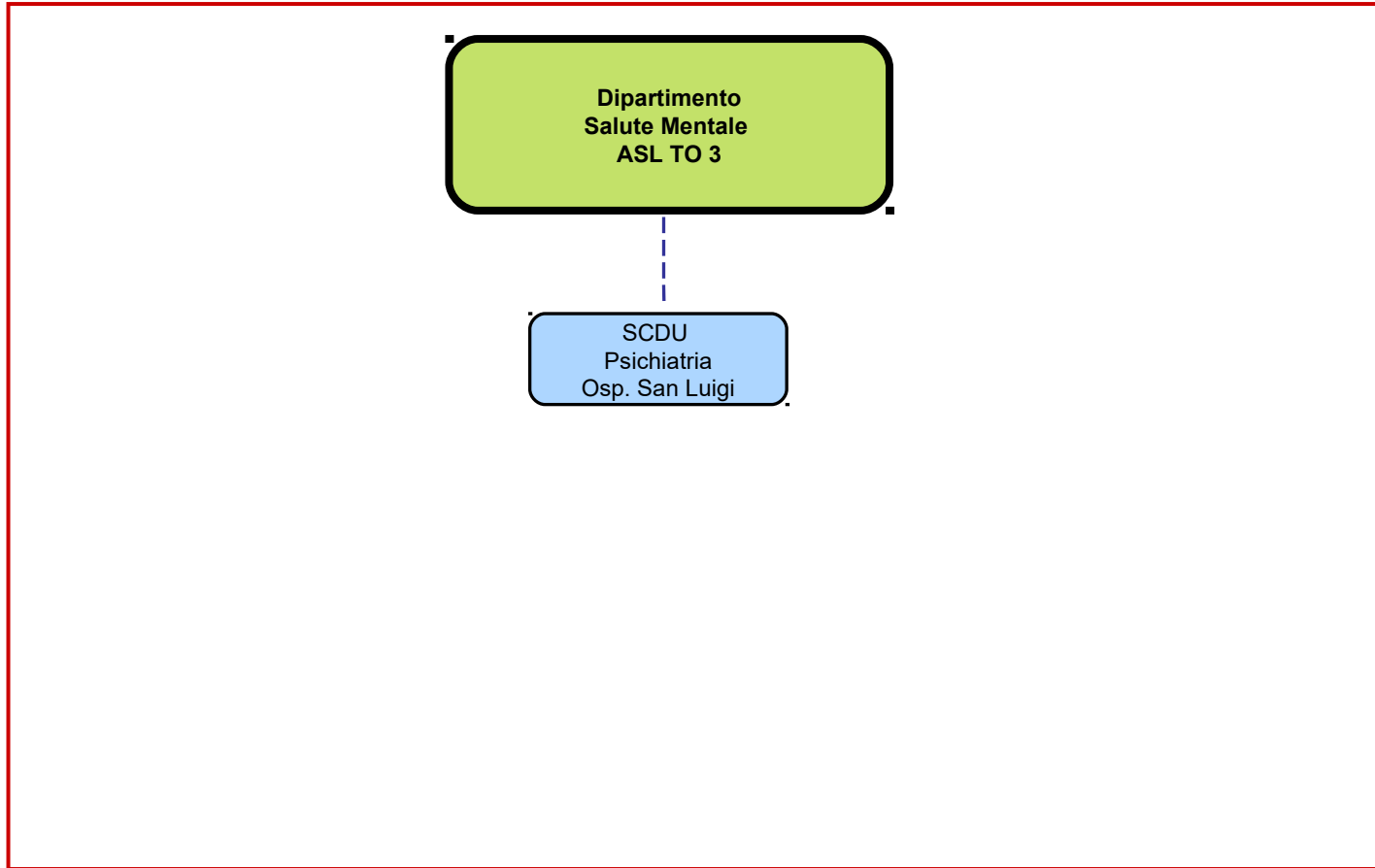
# Dipartimento emergenza accettazione



# Dipartimento continuità assistenziale



# DSM ASL TO 3 - Psichiatria



# Emodinamica

